



**FPP**

# **Flex Power Pack**

**By Fluid Power Products, Inc.**

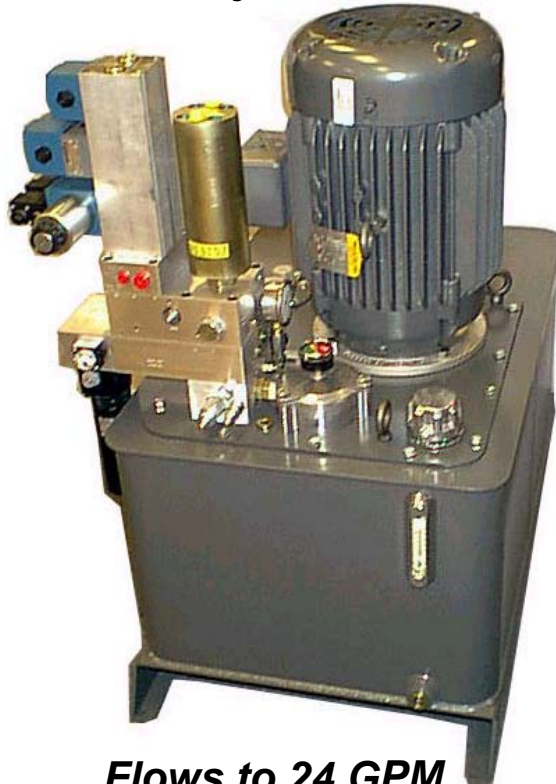
302 Turnpike Road  
Southborough, MA 01772

1777 Northgate Blvd.  
Sarasota, FL 34234

P:(508) 481-8881 F:(508) 485-4346 P:(941) 360-3311 F:(941) 360-0294

[www.fppinc.com](http://www.fppinc.com)

## **Series 25 Modular Hydraulic Power Units**



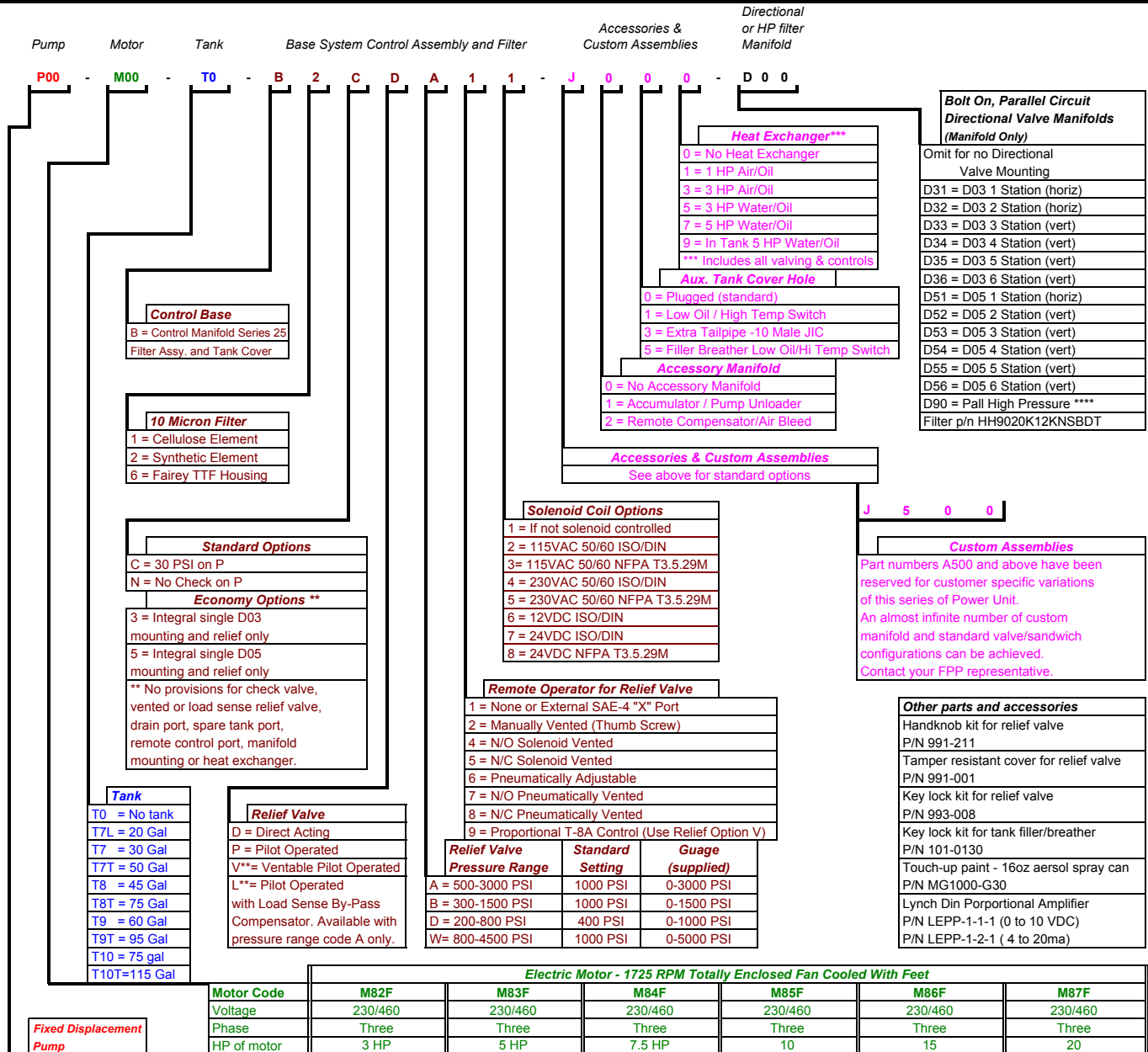
**Flows to 24 GPM  
3 thru 20 Horsepower  
Pressures to 4000 psi**

### **Standard features include...**

- Single manifold base unit**
- Fixed or variable displacement pump**
- Direct acting, pilot operated or ventable relief valve.**
- Pressure gage with gage snubber**
- Guarded sight gage with thermometer**
- Filtered lockable filler breather**
- Return line filter with condition indicator**
- Provision to directly add bar manifolds and other accessories**
- Provision to add in tank heater and heat exchanger**
- Oversize SAE threaded drain plug**

# Flex Power Pack

## Series 25 Modular Hydraulic Power Units - 3 to 20 HP - Ordering Code



**Fixed Displacement Pump**

Code	Pump Flow
P66 =	5.4 GPM
P74 =	6.2 GPM
P75 =	7.1 GPM
P76 =	8.5 GPM
P77 =	10.3 GPM
P81 =	11.2 GPM
P78 =	12.1 GPM
P82 =	12.5 GPM
P83 =	14.7 GPM
P84 =	17.0 GPM
P85 =	19.6 GPM
P86 =	22.3 GPM

**Variable Displacement Pump**  
(\*M=PVM, \*V=VPV, or \*R=PVR)

P91* =	7.5 GPM
P92* =	11.3 GPM
P93* =	15.1 GPM
P94* =	20.8 GPM

**Fixed Displacement Two Stage Pump**

P55 =	10.2 - 3.4 GPM
P56 =	13.6 - 3.4 GPM

Below 650 PSI      Above 650 PSI

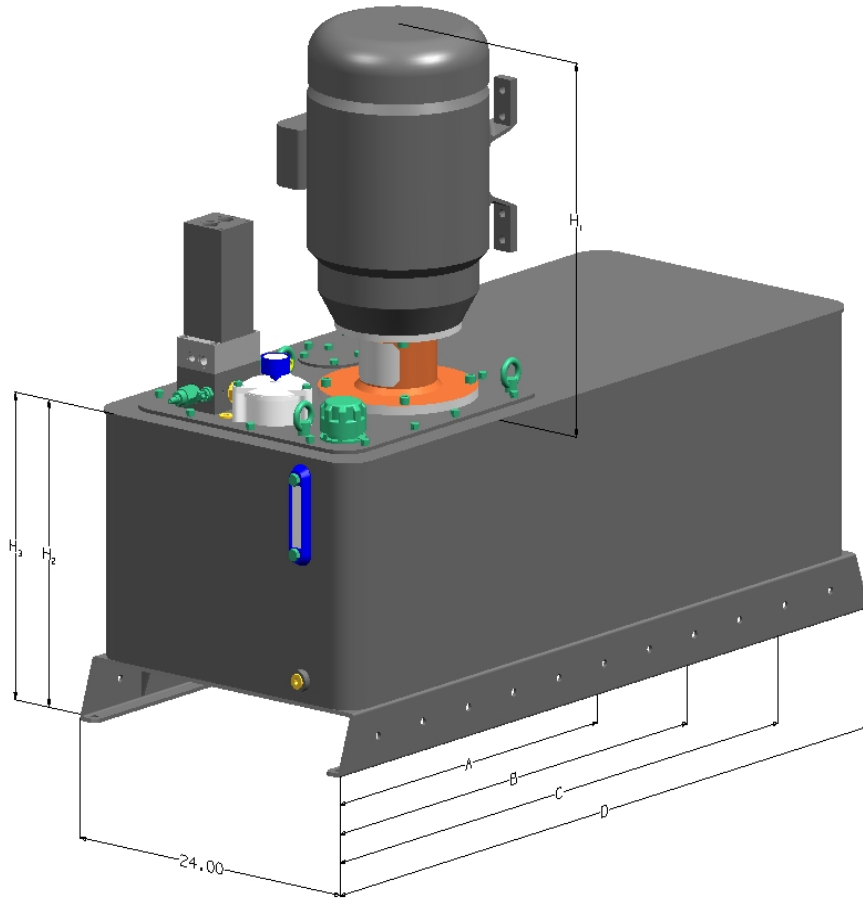
	A		A		A		A		A		A	
810 PSI	1360 PSI	2050 PSI	2730 PSI	4000 PSI	4000 PSI							
690 PSI	1170 PSI	1750 PSI	2340 PSI	3520 PSI	4000 PSI							
610 PSI	1020 PSI	1530 PSI	2050 PSI	3080 PSI	4000 PSI							
510 PSI	860 PSI	1290 PSI	1720 PSI	2590 PSI	3460 PSI							
420 PSI	700 PSI	1060 PSI	1420 PSI	2140 PSI	2850 PSI							
380 PSI	650 PSI	980 PSI	1310 PSI	1960 PSI	2620 PSI							
350 PSI	600 PSI	900 PSI	1210 PSI	1820 PSI	2430 PSI							
340 PSI	580 PSI	870 PSI	1170 PSI	1750 PSI	2340 PSI							
290 PSI	490 PSI	740 PSI	990 PSI	1490 PSI	1980 PSI							
250 PSI	420 PSI	640 PSI	860 PSI	1290 PSI	1720 PSI							
210 PSI	360 PSI	550 PSI	740 PSI	1110 PSI	1490 PSI							
190 PSI	320 PSI	480 PSI	650 PSI	980 PSI	1310 PSI							
570 PSI*	960 PSI*	1450 PSI*	1940 PSI*	2910 PSI*	3000 PSI*							
380 PSI*	640 PSI*	970 PSI*	1290 PSI*	1950 PSI*	2600 PSI*							
280 PSI*	480 PSI*	720 PSI*	960 PSI*	1450 PSI*	1940 PSI*							
200 PSI*	340 PSI*	520 PSI*	700 PSI*	1050 PSI*	1400 PSI*							
1280 PSI	2150 PSI	3230 PSI	4310 PSI	6470 PSI	8630 PSI							
1280 PSI	2150 PSI	3230 PSI	4310 PSI	6470 PSI	8630 PSI							

\* Maximum pressure at full displacement. System can operate at higher pressures with reduced flow rates.  
 \*\* Ventable and Pilot Operated Load Sense option not available with variable displacement pumps.

**Electrical panels with motor starters and controls are available, contact your Flex Power Pack representative**



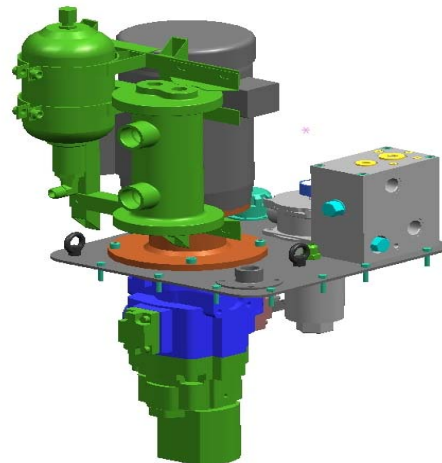
Flex Power Pack by...  
Fluid Power Products, Inc.



**Series 25 30 Thru 115 Gallon Reservoirs**

		<b>M82F</b>	<b>M83F</b>	<b>M84F</b>	<b>M85F</b>	<b>M86F</b>	<b>M87F</b>
Baldor Motor	230/460 Volt, 3PH 60 HZ, TEFC With Feet	CM3611T 3HP 182TC	CM3615T 5HP 184TC	CM3710T 7 1/2HP 213TC	CM3714T 10HP 215TC	CM2333T 15HP 254TC	CM2334T 20HP 256TC
	<b>H1</b>	19"	19"	20.75"	21.75"	23.5"	25.5"

Size/Gallon	<b>H2</b>	<b>H3</b>
<b>A</b> 28.5"	21"	
T7 = 30 Gal		
T7T=50 Gal		29"
<b>B</b> 38.5"		
T8 = 45 Gal	21"	
T8T=75 Gal		29"
<b>C</b> 48.5"		
T9 = 75 Gal	21"	
T9T=95 Gal		29"
<b>D</b> 58.5"		
T10=75 Gal	21"	
T10T=115 Gal		29"



TOP WORK